


Chapter 14 Evolution: A History and a Process:

- Identify Darwin's work and the two main points of his theory. *Survival of the fittest* → *Common Ancestor*
- Describe information the fossil record contains about life on Earth. *give evidence of evolution.* → *Variations in a Population.*
- Explain how similarities in structure and development among different species are evidence for evolution. *Chicken wing | Bat wing | Horse | Human*
ALL HAVE SAME BONE STRUCTURES

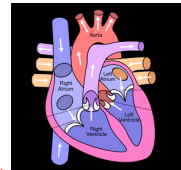
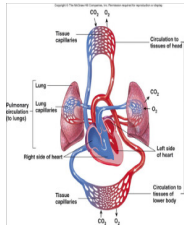
Chapter 15: Origins of Biological Diversity

- What is a species? *group with exact same features.*
- Know geographic isolation 
- Know speciation *new species evolve.*
- What is taxonomy? *How and why is it used*
Branch of science dedicated to classification of organisms.
- Know the Linnaean System of Classification

K P C O F G S
Relationships amongst organisms that lead to a common ancestor.

Chapter 30 – The Circulatory and Respiratory Systems:

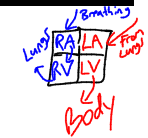
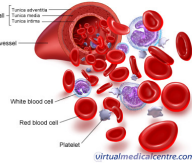
- Know the organs of the circulatory system and their functions



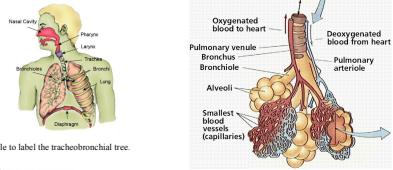
Be able to trace the flow of blood through the heart.

- Know both the pulmonary and systemic circuit. *PS = blood to body O₂ in lungs*
- Explain how blood pressure is measured.
- Know the instrument used to measure blood pressure.
- SS = Oxygenated blood to body.*

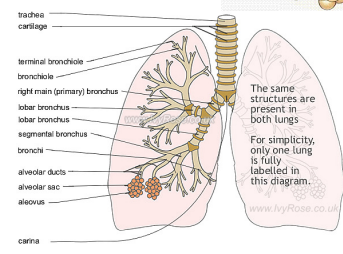
Identify the main components that make up blood.



- Know the organs of the Respiratory system and their function.



Be able to label the tracheobronchial tree.



The same structures are present in both lungs. For simplicity, only one lung is fully labelled in this diagram.

